



Flat 6, Seascape, Atlantic Way, Westward Ho, Bideford, EX39 1HX

£925.00 PCM

- Fully Furnished
- Allocated Off Road Parking
- Dual Aspect Lounge/ Dining Room
- Well Presented Throughout
- Panoramic Sea Views
- Modern Kitchen & Bathroom
- Close to Amenities
- Master Bedroom with Ensuite

Flat 6 Seascape is an immaculately presented first floor apartment featuring two double bedrooms, including a master with en-suite, large reception with a dual aspect, allocated parking, and stunning sea views over Westward Ho! beach. The apartment is being offered to the rental market fully furnished.

Regret No Smokers. Regret No Pets.

Rent £925.00 Deposit £1,067.00

Holding Deposit: £213.00 - required to secure the property.

Council Tax Band: A.

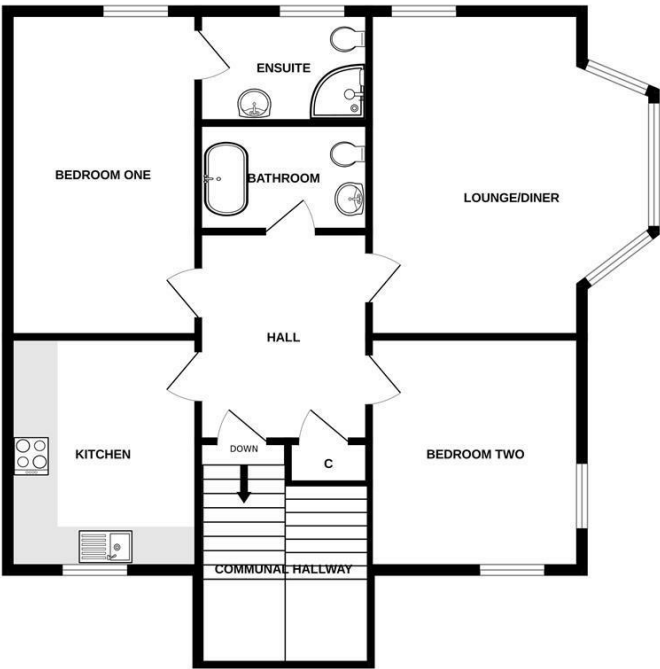
EPC Rating: C.

Energy Efficiency Rating		
	Current	Potential
Very energy efficient - lower running costs		
(92 plus) A		
(81-91) B		
(69-80) C	79	79
(55-68) D		
(39-54) E		
(21-38) F		
(1-20) G		
Not energy efficient - higher running costs		
England & Wales		EU Directive 2002/91/EC

Directions

From Bideford Quay, proceed towards Heyward roundabout and take the second exit signposted Appledore & Northam. Continue along this road into Westward Ho! passing the speed camera on your left. Upon entering the one-way system, "Seascape" will be found on your right-hand side.

GROUND FLOOR



Whilst every attempt has been made to ensure the accuracy of the floorplan contained here, measurements of doors, windows, rooms and any other items are approximate and no responsibility is taken for any error, omission or mis-statement. This plan is for illustrative purposes only and should be used as such by any prospective purchaser. The services, systems and appliances shown have not been tested and no guarantee as to their operation or efficiency can be given.
Made with Metreplan ©2025